

PLANNING DRAWING

This drawing has been prepared for submission to the relevant Local Authority as part of a Planning Application. It is not intended to assist with the pricing of any elements.

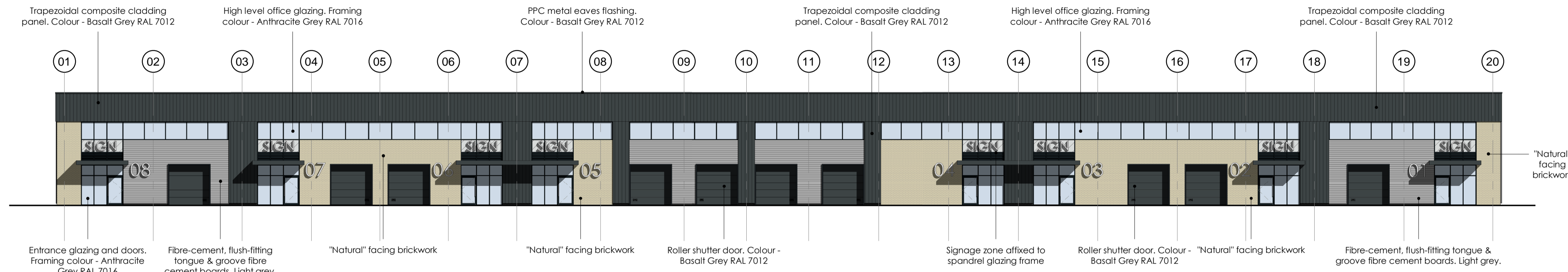
For Structural details refer to the Structural & Civil Engineers detailed design drawings & specifications.

For M&E information, refer to the M&E Engineers and sub contractor's design drawings & specifications.

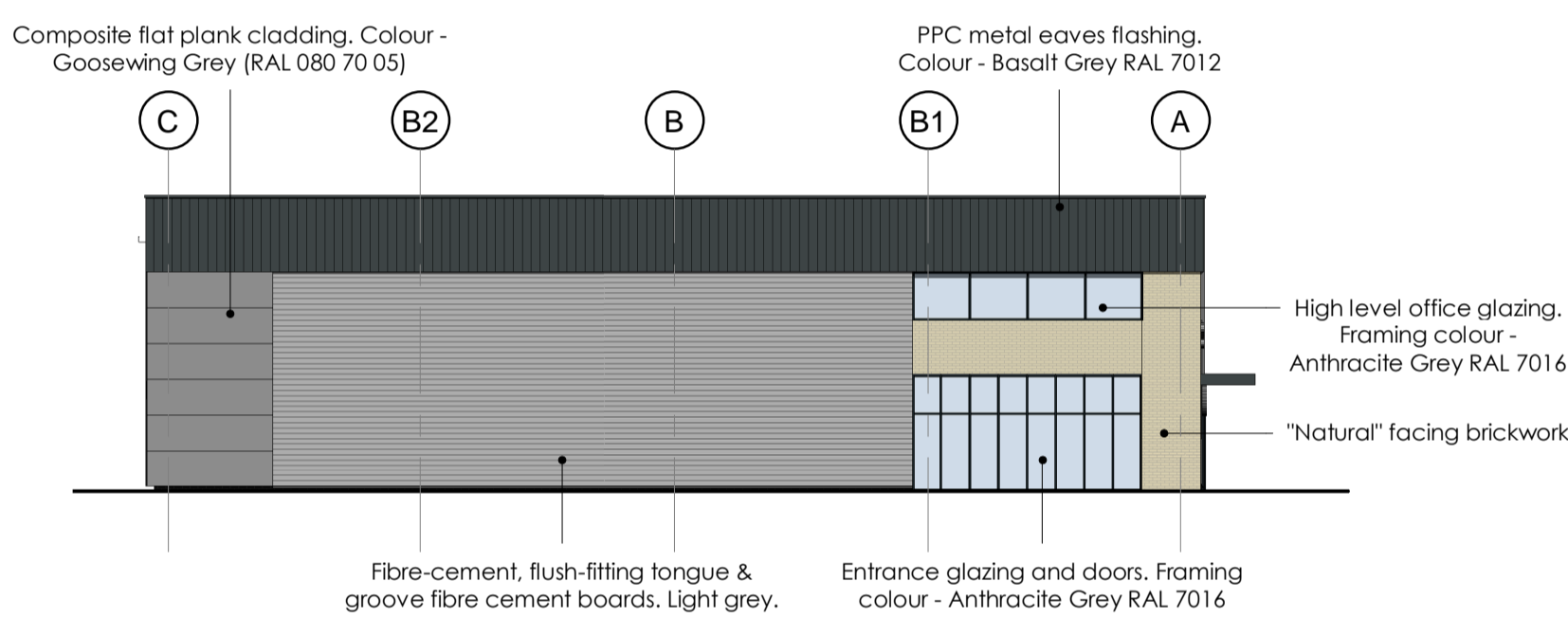
Do not scale from this drawing. Verify all dimensions and setting out on site. Notify any discrepancies to the architect.

For Health & Safety information, refer to the Designers Risk Assessments. This drawing is copyright and may not be reproduced in whole or part without written authority.

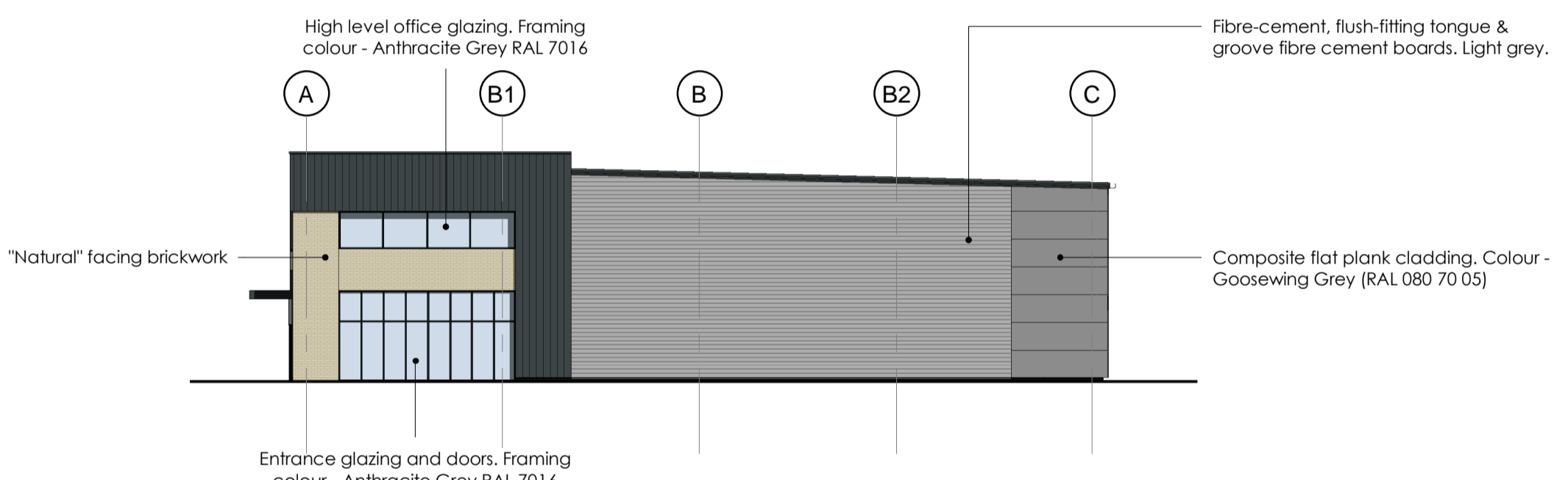
Rev	Date	Description	Drawn	CHK'D By
P01	13.07.23	PLANNING ISSUE	RG	LEEB
P02	21.07.23	UNIT 03/04 SPLIT UPDATED	RG	LEEB
P03	09.10.23	STRUCTURAL WORKS COORDINATED, ISSUED FOR PLANNING SUBMISSION	RG	LEEB
P04	12.10.23	PV ADDED TO ALIGN WITH M&E REQUIREMENTS	RG	LEEB
P05	18.03.24	BUILDING UPDATED TO MID-ROOF DESIGN, ISSUED FOR LOCAL AUTHORITY COMMENT	RG	LEEB



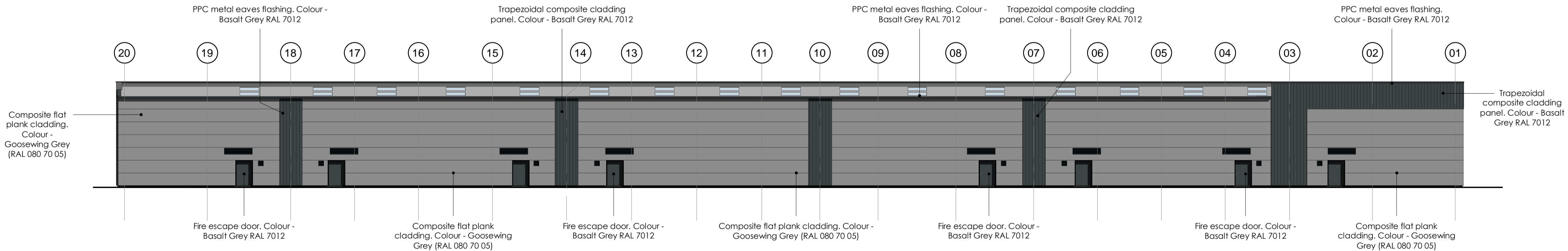
01 - Proposed West Elevation
1 : 200



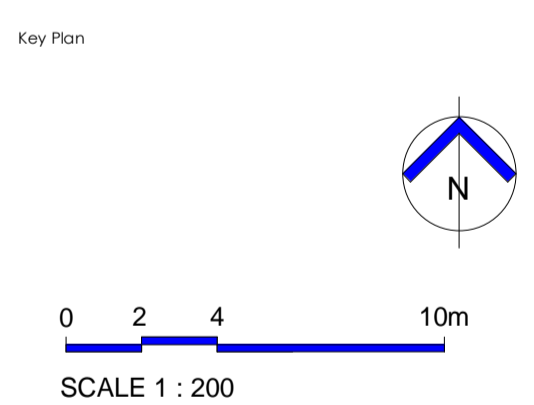
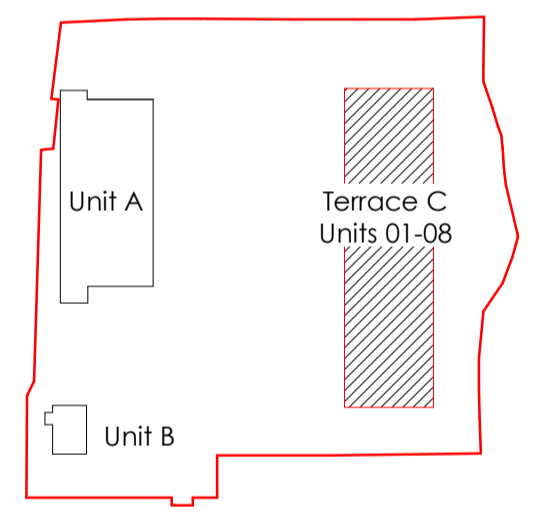
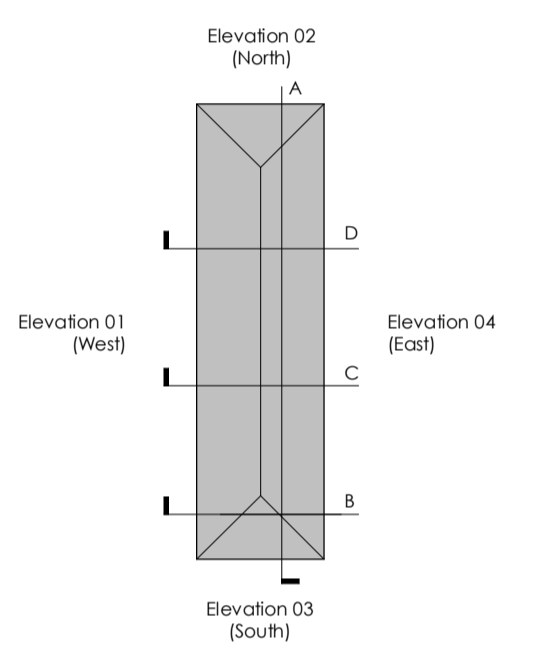
02 - Proposed North Elevation
1 : 200



03 - Proposed South Elevation
1 : 200



04 - Proposed East Elevation
1 : 200



THE HARRIS PARTNERSHIP
WAKELAND - T. 01924 291800
MANCHESTER - T. 0161 2385555
MILTON KEYNES - T. 01908 211 577
READING - T. 0118 950 7700
LONDON - T. 020 7409 1215

Client: **MAPLE GROVE DEVELOPMENTS**

Project Title: **PROPOSED MIXED USE DEVELOPMENT ASHWORTH LANE STOCKPORT ROAD HATTERSLEY**

Drawing Title: **UNIT C - PROPOSED ELEVATIONS**

Drawn	Checked	Scale	BA1	Status	Date
RG	LEEB	As indicated	SO		07.23

Drawing Status	Rev.	THP Project No
PLANNING	P05	17870

Project No. Originator Volume Level Type Rate Number
17870 - THP - ZZ - ZZ - DR - A - 1132